

Now Compatible With  
**amazon alexa**

## VL Touchscreen Alarm

*A Brilliantly Crafted Touchscreen Security System  
that Revolutionizes Your World*

## Crafted with Incredible Intelligence

*Introducing the new VL touchscreen panel –A modern security panel that has it all*

The VL touch screen panel is by far the most versatile security panel out on the market. With built-in expansion slots for various types of modules, it transforms into virtually any type of panel imaginable. This unparalleled flexibility makes VL customizable to meet all kinds of demands. By bringing security system, home automation, senior care, total visual monitoring solution, and energy management into one piece, VL guarantees enhanced lifestyle, safety, and convenience. Better yet –All features are brought to life with an exquisitely designed touchscreen.

### Security System with Style

VL Series features a 7" full-color, high-resolution touchscreen. Operating a security system is made easier with an intuitive graphic user interface with large icons and print font. The clean-cut, elegant aesthetics design renders VL Touchscreen Alarm contemporary in appearance.





## Designed with Unprecedented Flexibility

VL Touchscreen is an IP based alarm panel with built-in RF and ZigBee modules. Yet, with multiple internal expansion slots for LTE/3G, Z-Wave, VOIP, and Wi-Fi modules, users are given the freedom to customize their security panels to incorporate features that best suit their unique needs.

The functions of VL Touchscreen can also be extended by incorporating a variety of sensors. Up to 160 sensors can be added to the panel. These sensors can be configured to acquire different attributes.



## In a business sense...

VL Touchscreen Alarm assists CMS and Installers resolve the issues related to excess inventory as there is no need to stock up on alarm panels with different functionalities. The panel's superb expandability allows the CMS and Installers to serve their customers more readily without bearing the risk of overstocking. Moreover, storage space and costs can be saved by shrinking individual alarm panels into finger-sized modules.



## Home Automation and Energy Management

*Experience a New Level of Integrated Home*

VL supports ZigBee and Z-Wave enabled home automation and energy management capabilities, allowing users to gain a centralized control over household appliances, lights, and digital locks. Such capabilities not only enhance home safety and comfort level, they also help conserve energy.



### Lighting

Automatically turns on/off lights or adjusts the brightness of lights according to conditions configured in the VL panel.



### Thermostat

Compatible with thermostat TMST-1ZB, household temperature can be automatically adjusted according to preset conditions.



### Digital Locks

No need to fumble through pockets or purse for keys!  
Compatible with Yale locks, you can lock/unlock your door with a simple touch on smartphones.



### Compatibility with Amazon Echo

The VL series are compatible with Amazon Echo and Echo Dot products allowing users to use Amazon Alexa voice control to arm and disarm their security system using a secure PIN. Users will also be able to voice-control interact with other VL series compatible devices like thermostats, lights, and smart locks.

## Scenes and Schedules

Setting up schedules and scenes with ZigBee and Z-Wave devices can bring convenience, energy saving benefits, and enhanced security

### Enhanced Security

Set lights to be turned on at a preset schedule to pretend you are at home while you are away on vacation.

### Extra Convenience

No need to rush home if you forget to turn off household appliances.

### Energy Saving Purposes

Have devices at different locations be automatically turned on and off at various times of the day.

## Total Visual Monitoring Solution

*Allowing you to always stay connected*

VL works with PIR Video Cameras/PIR Cameras that detect unauthorized movements and capture video/images when an alarm is triggered. Upon an alarm, a 10-second video clip or 3 color images will be captured with timestamp and sent to users and CMS for visual verification.

IP cameras can be added to enable real-time video monitoring, allowing users to keep a close eye on valuables and family members over smartphones or PC. IP cameras also send visual alerts to the CMS and users upon an alarm. The 30-sec alarm videos cover the 20-sec pre-alarm and 10-sec post-alarm periods.



VST-1818 R3  
IP Camera



VST-862  
Camera PIR  
Motion Detector



EIR-32  
Outdoor Pet-Immune  
PIR Motion Detector



## Home Portal Server

*An All-in-One Solution for Security Professionals and Home Owners*

Home Portal™ Server is a high capacity IP/GPRS-based security management solution designed to meet the needs for both monitoring centers and end users. Our Home Portal Platform can be customized to work seamlessly with the infrastructure of monitoring centers, introducing new services yet allowing monitoring personnel to continue using their familiar operational platform.

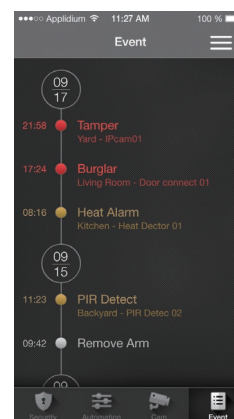
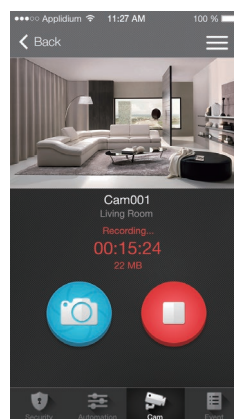
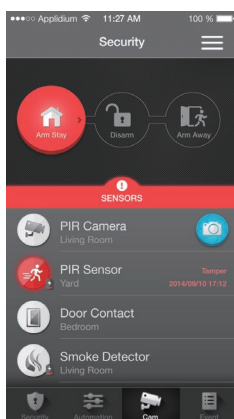
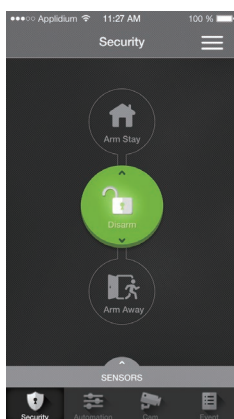
Home Portal™ Server enables monitoring personnel to operate alarm systems via a web browser and end users to manage their homes via a mobile or tablet application.



## Mobile Application

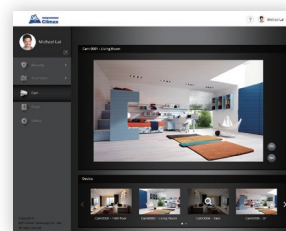
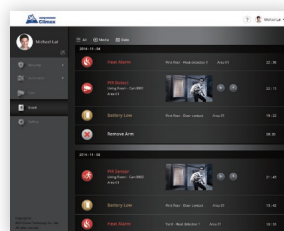
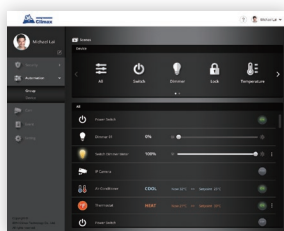
*Placing VL into your pockets*

Vesta Home Application's elegant was designed with focus of user experience and usability in mind, allowing users to remotely monitor and control security alarm system and home automation appliances anytime, anywhere.



## Web Browser Application

Secure your home, take control of your energy usage and manage your appliances from your smartphone, or web browser. The free app is available from both Apple's App Store and Google Play.



\* Vesta Home App can be downloaded from iPhone App Store or Android Google Play.



## Senior Care

VL Touchscreen Alarm works with healthcare devices to form a protection net for you and your loved ones.



Panic Button



Wrist Transmitter



## Providing 24/7 Protection

Our wireless security accessories are an excellent complement to VL, providing 24/7 protection. Backed with over two decades of expertise in the field, all accessories are guaranteed to deliver the highest level of performance and reliability. Requiring no electrical wireless, these devices result in cleaner, hassle free installations.

### Emergency Monitoring:

Wireless smoke, heat, water, and CO detectors can be incorporated into the VL system to help users avoid life-threatening conditions.

### Intrusion Monitoring:

Elegant and slim-sized door contacts are used to monitor the opening/closing of doors and windows and alert the security system to any potential dangers. Microprocessor controlled PIR motion sensors are used to detect unauthorized movements on the premises.



## Features

- 7" High Resolution color graphic touchscreen with intuitive user interface
- Communication Path: IP (Ethernet), Wi-Fi
- Built-in Module Options: RF, ZigBee
- Expansion Slot Module Options: LTE/3G, Z-Wave, WiFi
- Two area configurations, each area supports up to 160 wireless zones
- Voice over Internet Protocol (VoIP) capabilities
- Alarm event reporting:
  - Standard CID/SIA reporting over 3G/LTE or IP (Ethernet)
  - Modified CID reporting via SMS (Text/CID) over 3G/LTE
  - Email, SMS, and Push notification via HPS Server
- Home Security capabilities
- Security Visual Verification and Real-time Monitoring
- ZigBee and Z-Wave based home automation capabilities
- Energy Management capabilities
- 24/7 Environment Emergency Monitoring
- Senior Care Protection
- Remote management of lights, thermostats, locks, and other home electronic appliances via Smartphone App and Web browser
- Three Arming modes: Arm /Arm Stay/ Disarm
- Built-in speaker and microphone
- Wall or Table mount
- Real-time clock and weather display
- Built-in Siren and Backup Battery
- Over-the-air (OTA) firmware update capability
- Compliant with CE 0681 (R&TTE Directive)/ EN 300220-1&2/ EN 300328/ EN 301489-1&3&17/ EN 60950-1/EN 62311 requirements



## Specifications

RF Frequency	433MHz / 868MHz
ZigBee Protocol	ZigBee Pro HA 1.2, 2.4GHz
Z-Wave Protocol	868.40MHz (EU) / 908.40MHz (US), Z-Wave Plus 500 series module
Wi-Fi Protocol	802.11 b/g/n
3G / LTE Frequencies	2100 / 1900 / 1800 / 1700 / 850 / 800 / 900 / 2600MHz
Power Supply	12V/2A, DC Adapter
Backup Battery	7.2V, 1600mAh, Ni-mH rechargeable battery pack
Battery Backup Time	14 hours*
Operating Temperature	-10°C to 45°C (14°F to 113°F)
Operating Humidity	Up to 85% non-condensing
Dimensions	250 x 182 x 42mm
Compliant Listing	CE0681 (R&TTE Directive) / EN300220-1&2 / EN300328 / EN301489-1&3&17 / EN62311

*Note: Actual battery life may vary with settings, conditions, operating environment and usage.*


## Order Information

### VL Series

**VL-1-RESA** Smart Home Security Alarm System with RF + ZigBee + RJ45 port (IP Connection)

### VL Series Expansion Modules

- EV-WIFI** WiFi IP Communication expansion module
- EV-3G** 3G expansion module for two-way voice support
- EV-ZW** Z-Wave expansion module for home automation

A large, solid blue graphic with a wavy, undulating shape that spans across the upper half of the page. It has a smooth, flowing appearance, resembling a stylized wave or a modern architectural element.

**Visit our company website or contact our global sales representatives for more information on VL Touchscreen Alarm.**

All above trademarks are property of their respective owners.